

Breathe Easy with Safari Snorkels

Snorkel Models

Contact

Home



Safari Snorkel - SS20HF

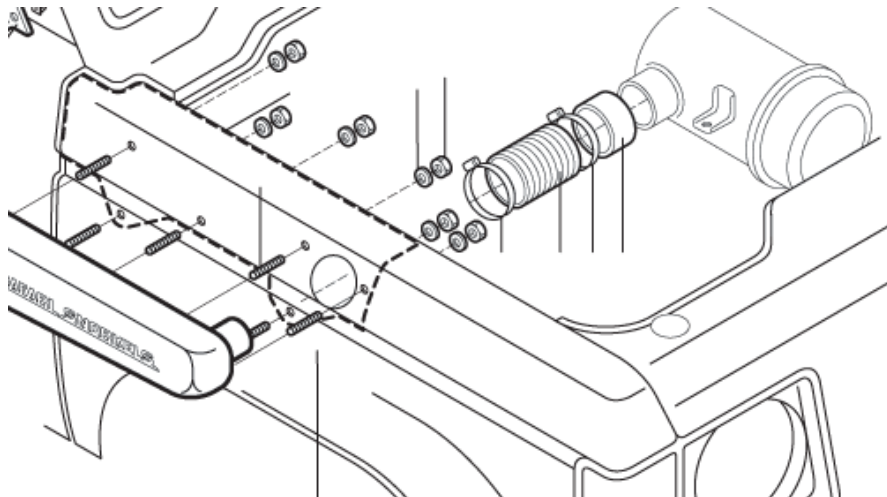
The Safari SS20-HF snorkel is tough and stylish and has been designed to deliver a huge volume of the coolest and cleanest air possible into the standard air cleaner assembly of the Mitsubishi Pajero.

With the variety of engine options available in the Pajero, Safari took the decision to design a snorkel system that exceeded the huge air flow requirements of the powerful 3.0L V6 gasoline and the mighty 2.5L turbo diesel.





Close attention to the internal cross sectional profile, area, air velocity and flow path through each and every point along the entire length of the snorkel system ensures that the greatest air flow is achieved.



This of course applies to components that are not visible. For example a tough straight-shot hose is installed inside the inner guard and forms a positive connection to the standard air cleaner assembly.

The result is maximum engine performance and the best possible fuel economy within the tight confines of the inner guard and engine bay.



Huge air flow is but one aspect of the ultimate in snorkel design. The Safari air ram is designed to perform two very important roles. The most obvious is to funnel cool clean air into the snorkel body - but just as importantly, the Safari air ram acts as a highly efficient water separator to remove rain water from the incoming air stream - thus ensuring safe engine operation through even the most torrential

tropical storms.

In addition, the detachable Safari air ram can be rotated to any position. This means great peace of mind for those who plan to travel in cold or high altitude conditions where heavy snow falls are anticipated. By rotating the air ram to face away from the prevailing wind/direction of motion, the air ram delivers additional protection from the choking effects of snow build-up inside the air intake.

The Safari Snorkel body is manufactured to the highest standards in

durable, UV stable, cross linked polyethylene material. In addition, the substantial material wall thickness delivers huge physical strength to ensure that the snorkel breezes through the toughest off-road conditions on the planet.



The Safari Snorkel system is supplied as a complete and comprehensive system that includes every nut, bolt and bracket required for installation - right from robust zero-corrosion stainless steel studs, self-locking nyloc nuts and large diameter anodized body washers through to the tough plastic A-pillar inserts.



An accurately marked template is also provided to ensure that the installation of the snorkel body to panel work is as precise as possible and eliminates any guess work where holes need to be drilled.

Breathe Easy - The genuine Safari Snorkel is positively sealed and delivers a continuous and cooler supply of air for the best engine protection on the planet.

