

## XT40 SPECS/PART NUMBERS

**Part Number:** 77500

**Rated Line Pull:** 4000 lbs (1814 kgs)

**Motor\*:** 12V DC, 1.5 hp (1.1 kW) Permanent Magnet

**Controls:** Wireless Remote and Universal Mount Mini Rocker

**Gear train:** 3-Stage Planetary

**Gear Ratio:** 136:1

**Clutch (freespool):** Sliding Pin and Ring Gear

**Brake:** Roller Disk

**Drum diameter/length:** 2.25"/4.7" (57mm/119mm)

**Kit Shipping Weight:** 31.4 lbs (14.2 kgs)

**Rope:** Synthetic, 7/32" x 50' (5.5mm x 15.2m)

**Fairlead:** Roller

**Recommended Battery\*:** 14 amp/hour minimum

**Duty Cycle:** Intermittent

**Battery Leads:** 6 gauge

**Finish:** Steel Grey Powder Coat

**Warranty:** Limited Lifetime (valid in USA and Canada only)

**Winch Weight:** 14.4 lbs (6.5kgs)

\*Designed for use with 12V DC battery systems only. No other voltage systems recommended.:

PERFORMANCE DATA			PULL BY LAYER
Line Pull Lbs.(Kgs.)	Line Speed FT./min(M/min.)	Motor Current	Pull by layer layer/Lbs(Kgs.)
4000 (1814)	4.6 (1.4)	314	1/4000 (1814)
3000(1360)	7.9 (2.4)	232	2/3320 (1506)
2000 (907)	12.7 (3.9)	157	3/2855 (1295)

1000 (454)                      18.6 (5.7)                      88                      4/2512 (1140)

0                      25 (7.6)                      21

**DUTY CYCLES**

**Load lbs (kgs)                      Run Time                      Distance ft. (m)                      Cool Time (min)**

0                      2.5 min                      55 (16.8)                      12

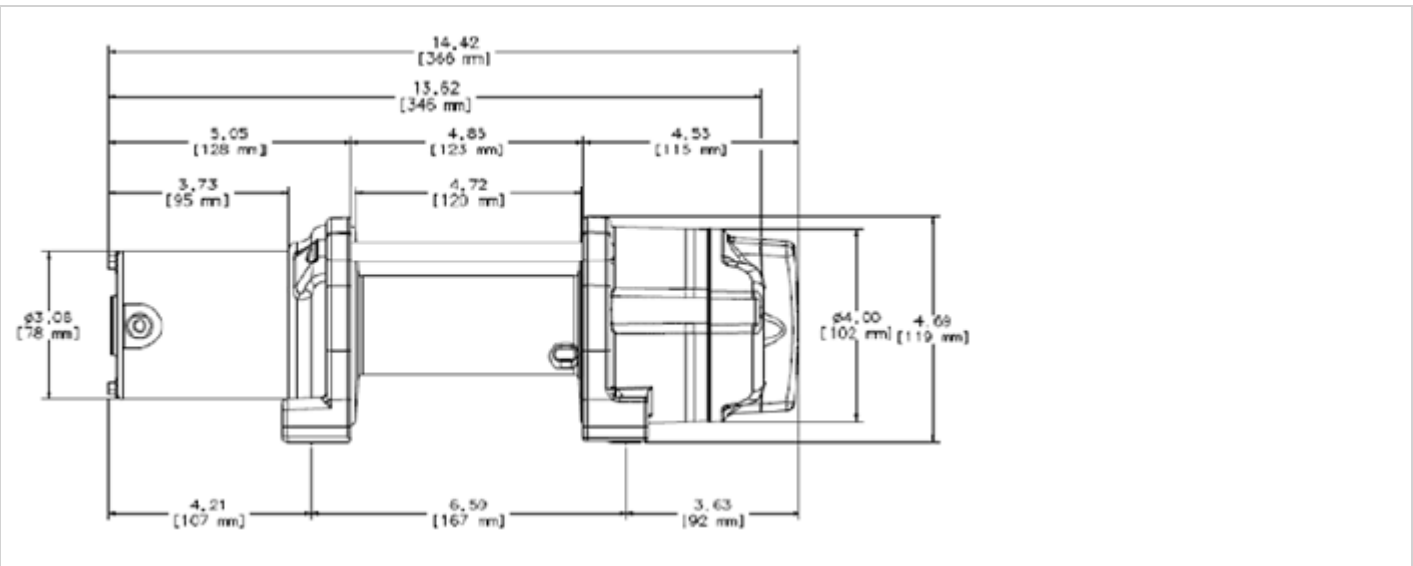
500 (227)                      2.0 min                      45 (13.7)                      10

1000 (455)                      1.5 min                      27 (8.2)                      10

2000 (907)                      45 sec                      10 (3.0)                      10

3000 (1360)                      30 sec                      4 (1.2)                      10

4000 (1814)                      10 sec                      1 (0.3)                      10



**Winch Dimensions:** 14.4" L x 4.5" D x 4.7" H **(36.6cm L x 12cm D x 12cm H)** **Mounting Bolt Pattern:** 3.0" x 6.59" (76mm x 167mm)